

# GeoNeurale

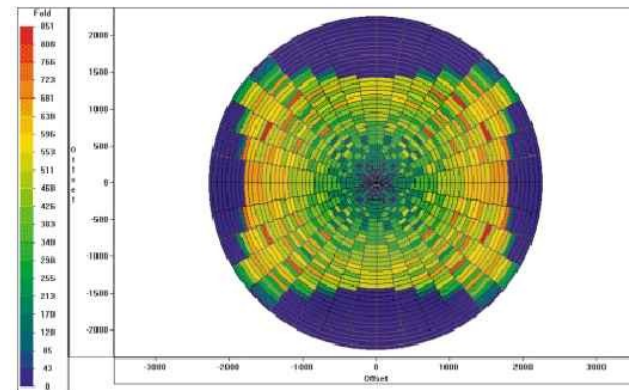
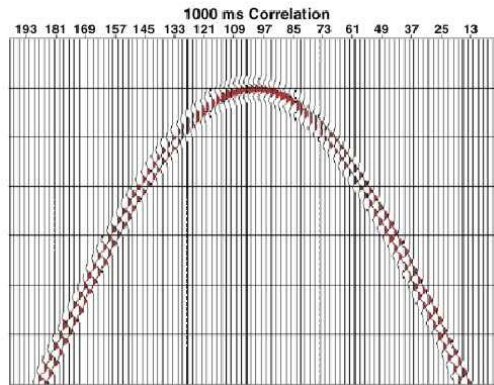
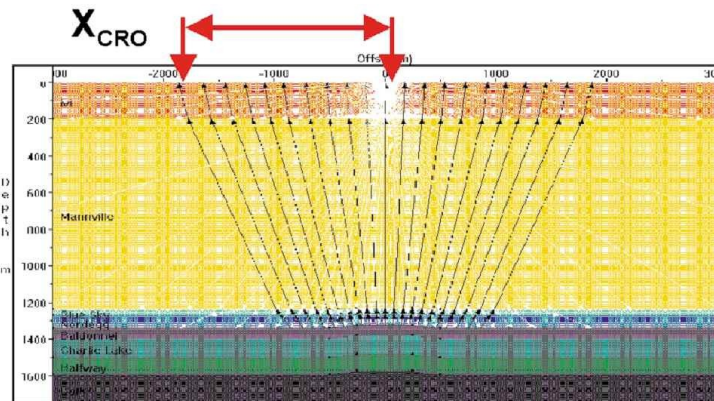
announces

## 3D Land Seismic Planning

*Andreas Cordsen*

28 – 30 March 2012

Munich



# *3D Land Seismic Planning*

MUNICH

at the

*GATE – Garching Technologie und Gründerzentrum*

28 – 30 March 2012

3 DAYS COURSE

INSTRUCTOR: Andreas Cordsen

LEVEL: Advanced

AUDIENCE: Seismic Interpreters, Processors, and Imagers, Petroleum Geologists and Geophysicists  
Reservoir Engineers.

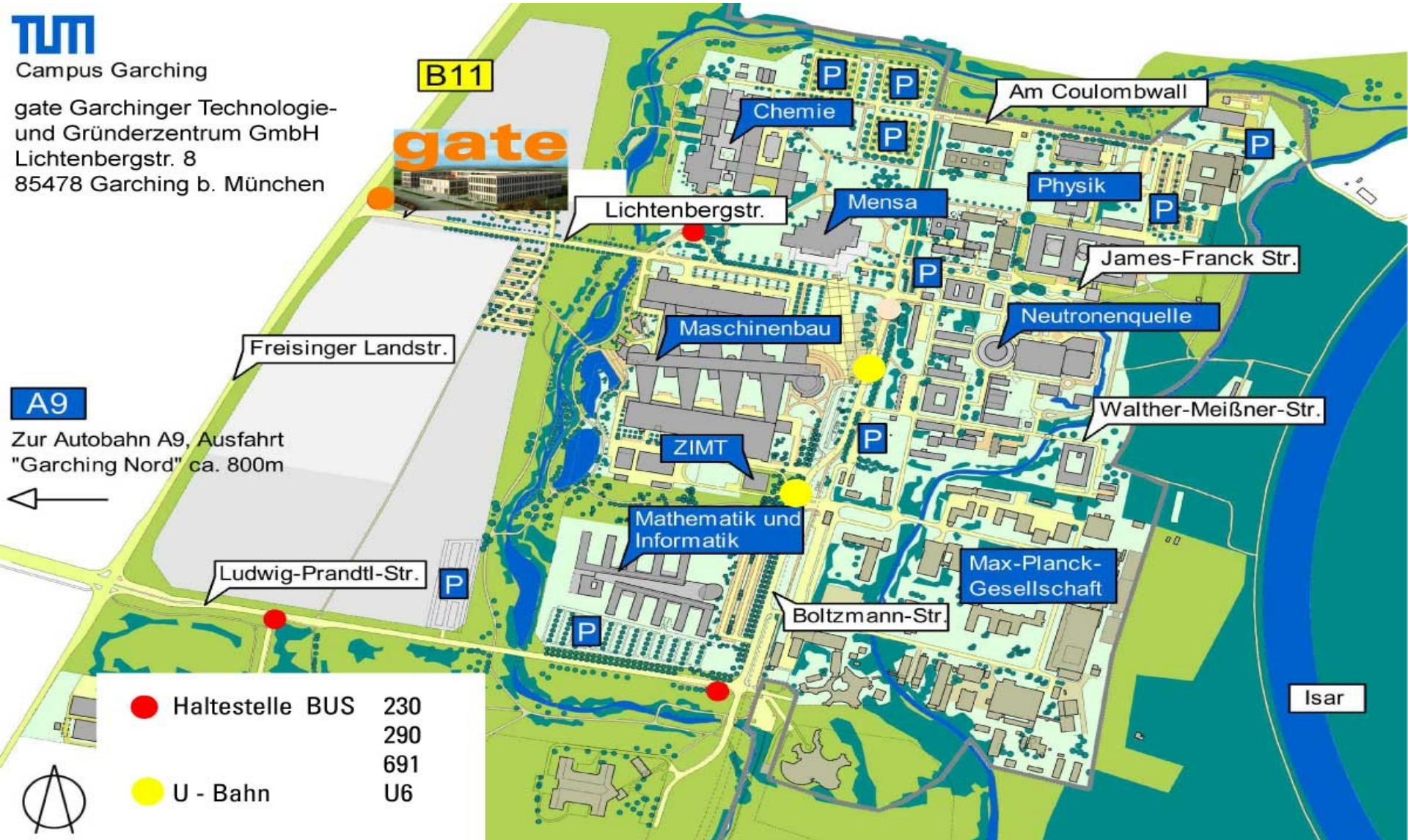
COURSE FEES: 2450 Euro + VAT (19%)

REGISTRATION DEADLINE : 28 February 2012

ONLINE REGISTRATION: [www.GeoNeurale.com](http://www.GeoNeurale.com)

## GeoNeurale Office and Training Location at the Munich-Garching Research Center

**TUM**  
Campus Garching  
gate Garchinger Technologie-  
und Gründerzentrum GmbH  
Lichtenbergstr. 8  
85478 Garching b. München



**A9**  
Zur Autobahn A9, Ausfahrt  
"Garching Nord" ca. 800m

- Haltestelle BUS 230  
290  
691  
U6
- U - Bahn



## *3D Land Seismic Planning*

This course covers all the practical aspects of conducting a successful 3D survey in a land or transition zone environment.

**Duration:** three days

This course will teach you to plan and oversee a 3D land seismic survey.

It will expose you to the practical aspects of 3D survey design and then teach you the basics of planning and designing a survey. The class will discuss different survey techniques, designs and geophysical limitations, along with field layouts and operational issues.

Modern acquisition equipment and recording techniques will be shown along with future directions and current state of the art for the industry.

## PROGRAM

### **From the first day of training you will be able to:**

differentiate the current trends in industry toward 3D  
recognize the basic nomenclature of 3D survey designs  
distinguish the bin size rules and target depth rules  
determine Xmin and Xmax limits for a survey  
determine aprons, edge management and image areas  
identify narrow vs. wide azimuth surveys  
appraise basic 3D layouts and some of the practical designs.

### **From the second and third day of training you will be able to:**

appraise advanced 3D layouts and evaluate their advantages  
discuss modern acquisition equipment, techniques and hardware  
explain modern thinking on array design and application  
recognize practical field issues and operations  
determine shooting strategies, zippers, along with offsets and skidding  
recognize processing and interpretation impacts on survey designs  
identify the utility of orthomaps, GIS data and operational issues  
explain converted wave 3D design and operations  
recognize the current state of the art in land 3D seismic surveys and equipment.

## **Andreas Cordsen**

Andreas Cordsen has over thirty years of industry experience in Europe and North America and has become a specialist in applying innovative 3-D seismic design and interpretation approaches to solving exploration and development problems for companies in the Western Canadian Basin and Latin America. In that capacity, he has played a key role in the discovery of several significant oil and gas pools over many years. Mr. Cordsen is President & CEO of Geophysical Exploration & Development Corporation (GEDCO), a provider of geophysical software solutions like OMNI 3D (for 3D design) and VISTA (for seismic data processing). He is a member of SEG, CSEG, EAGE, and APEGGA.

# Registration Details

- Course fee: 2450 Euro + VAT (19%)
- Registration deadline : 28 February 2012

## Payment and Registration

Tuition fees are due and payable in Euro upon enrollment in the course by bank transfer to the bank account given below unless another payment form is agreed

Unless otherwise indicated, the payment should be received before the date specified in the invoice as payment term to make the enrollment effective.

To register to the course please fill in the [registration form](#) and fax or email it along with the confirmation of your bank transfer to:

GeoNeurale

Am Nymphenbad 8

81245 Munich

T +49 89 8969 1118

F +49 89 8969 1117

ONLINE REGISTRATION: [www.GeoNeurale.com](http://www.GeoNeurale.com)

**Bank Information:** Genossenschaftsbank EG Muenchen

Bank Account N. 519618

BIC – Code : GENODEF 1M07

BLZ 701 694 64

IBAN : DE19 7016 9464 0000 5196 18

Please indicate your name and the purpose: "3D Land Seismic Survey Planning - course fees".

[www.GeoNeurale.com](http://www.GeoNeurale.com)

## Provisions

Tuition fees are due and payable in Euro upon enrollment in the course. Unless otherwise indicated, fees do not include student travel costs and living expenses.

Payments are also accepted via personal or company check, traveler's check, credit card, and Company Purchase Orders.

### Cancellations by Participant:

All cancellations are subject to a 100 Euro non-refundable cancellation fee.

Cancellations have to be notified to our office, at least 30 days prior to the course start date to receive a refund (less the 100 Euro cancellation fee).

If the participants are unable to cancel prior to the 32 days notification date, they may substitute another person at their place in a course by notifying us prior to the course start date.

### Course Cancellations:

GeoNeurale reserves the right to cancel the courses if necessary. The decision to cancel a course is made at least two weeks prior to the course start date. If a course is cancelled, the participant will receive a full reimbursement of the tuition fees ( but not of the plane ticket or hotel expenses or any other costs), or will be enrolled in another course upon his decision ( the cost of the original course will be applied to the cost of the replacement course ).

GeoNeurale can not be responsible for any penalties incurred for cancellation or change of airline or hotel reservations .

### Refunds:

GeoNeurale will promptly remit all refunds of tuition fees due to cancellations or annulment (less any appropriate non-refundable cancellation fee) within 30 days of the course cancellation.

### Force Majeure:

GeoNeurale can not be responsible for cancellations due to "force majeure" events : airplane or airport strikes, emergency situations, natural catastrophes and all situations and incidents independent or outside the human control that can delay or cancel the course. In case of such events related cancellations the course tuition fees will be refunded to the client .

GeoNeurale is not responsible for any delay or absence caused by the training instructor or training instructor company for reasons which are independent or out of the control of GeoNeurale s decisions.

**AGREEMENT:** Upon enrollment all parts accept the above mentioned provisions. The above specified provisions shall regulate the agreement between GeoNeurale and the participant and the participant company and will enter into force upon enrollment.

## **REGISTRATION FORM**

Please fill out this form and Fax to +49 89 8969 1117  
or Email to Courses@GeoNeurale.com

### *3D Land Seismic Planning*

Munich, 28 - 30 March 2012

Course Fee: 2450 Euro + VAT (19%)

Name:

Company:

Address:

Job Title:

Phone:

Fax:

Email:

SIGNATURE: \_\_\_\_\_

[www.GeoNeurale.com](http://www.GeoNeurale.com)

# INFORMATIONS, HOTELS, MAPS, LINKS

## TRAINING LOCATION – RESEARCH CENTER

<http://www.geoneurale.com/documents/GATE-Y7.pdf>

## GATE GARCHING

<http://www.geoneurale.com/documents/GATE-Y6.pdf>

## MAP MUNICH-GARCHING

<http://www.muenchen.city-map.de/city/db/13020800001/14269/Garching.html>

## MUNICH INFO and MAP MUNICH CENTRAL

<http://www.muenchen.de/home/60093/Homepage.html>

## MAP MUNICH UNDERGROUND

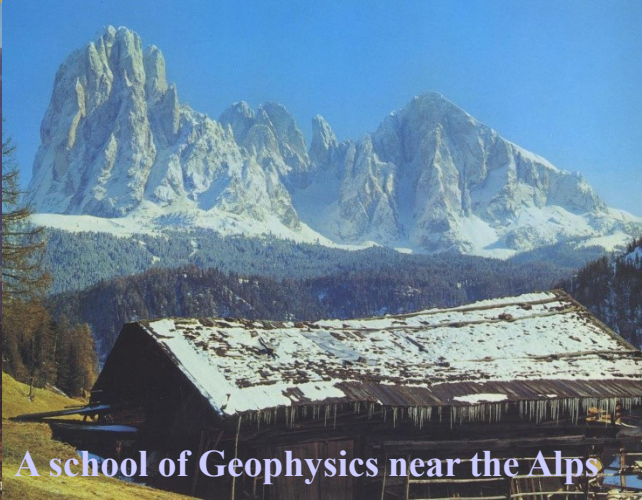
<http://www.mvv-muenchen.de/web4archiv/objects/download/3/netz1207englisch.pdf>

## HOTELS NEAR GeoNeurale

<http://www.geoneurale.com/documents/HOTELS-GARCHING.pdf>

## BAVARIA INFO

<http://www.geoneurale.com/documents/Around-Munich-Info.pdf>



A school of Geophysics near the Alps